

Business Process Flexibility and Decision-Aware Modeling— The Knowledge Work Designer

Knut Hinkelmann

Abstract This chapter describes the Knowledge Work Designer, a modeling method for knowledge work. It is based on two principles: (1) the separation of business logic and process logic and (2) the support of both structures and unstructured knowledge. Process logic can be represented in a structured way in BPMN and in a nonstructured way with CMMN. For real processes there is no strict separation between structured processes and cases. Therefore, the Knowledge Work Designer offers a deep integration of BPMN and CMMN. Business logic can be represented in a structured way using decision tables. Unstructured business logic can be represented in documents. The separation of business logic and process logic allows for simpler process model and easier maintenance.

Keywords Knowledge work • Business process management • Case management • Decision modeling

1 Introduction

Peter Drucker [1] coined the term knowledge work in 1969. He distinguished between knowledge workers and manual worker. He insisted that new industries will employ mostly knowledge workers. Nowadays, we can see that many workers are knowledge workers. Rosen [2] even regards every worker as a knowledge worker. For Davenport [3], knowledge workers are the key to innovation and growth in today's organization.

K. Hinkelmann (✉)
FHNW University of Applied Sciences and Arts Northwestern Switzerland,
4600 Olten, Switzerland
e-mail: knut.hinkelmann@fhnw.ch

The objective of the Knowledge Work Designer is to model business processes that cover a broad spectrum of knowledge work. It is based on the following two principles:

- Balance between process logic and business logic
- Support of knowledge work with different degrees of structure

1.1 Balance Between Process Logic and Business Logic

In a business process, we distinguish between process logic and business logic (see Fig. 1).

- Process logic is the knowledge *about* the process, in particular, the process flow with events and activities, the involved participants and resources. The process logic is typically represented in a business process diagram.
- The business logic is the knowledge *in* the process. It corresponds to the practice aspect of [3, 4] and is about how the work is actually done. Understanding business logic means to understand how individual workers or applications respond to the real world of work and accomplish their assigned tasks.

The balance between process logic and business logic is an important consideration for anyone attempting to address knowledge work [3]. Business process modeling tools focus on the process flow. Decision criteria are typically represented as gateways leading to unnecessary complex process models. The Knowledge

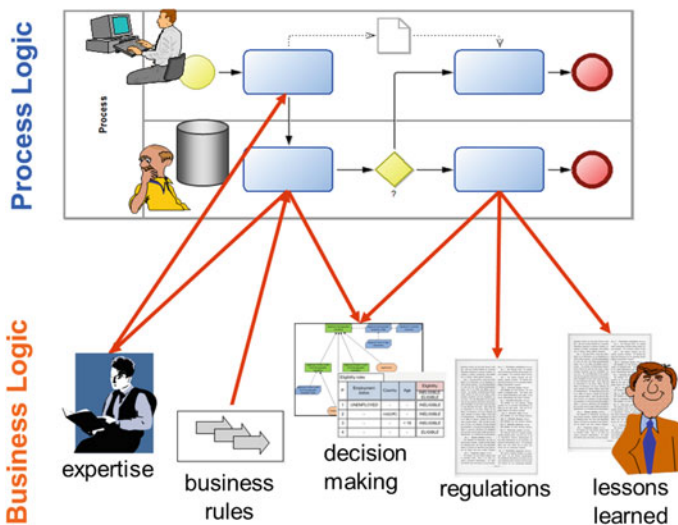


Fig. 1 Distinguishing process logic and business logic

Work Designer, however, contains model types for both process logic and business logic. This allows to model decision-aware business processes as introduced by [5]. A decision-aware business process is a process “that is designed to distinguish between tasks that perform work (i.e., process tasks) and tasks that come to conclusions based on business logic (i.e., decision tasks)” [5].

1.2 Degree of Structure

According to a survey, about 60 % of a knowledge worker’s day is spent in unstructured and often unpredictable work patterns, while only about 40 % is structured, predictable, and automatable [6]. The different degree of structure is a characteristic of both business logic and process logic.

Davenport [3] distinguishes four types of knowledge work (see Fig. 2). The distinction is based on two dimensions: level of interdependence and complexity of work. Process logic determines the way of collaboration while business logic corresponds to the knowledge work of individual actors. The Knowledge Work Designer offers modeling languages for both structure and nonstructured knowledge work on individual and collaborative level.

Gadatsch [7] distinguishes three instead of two types of processes with respect to their degree of structure (Fig. 3).

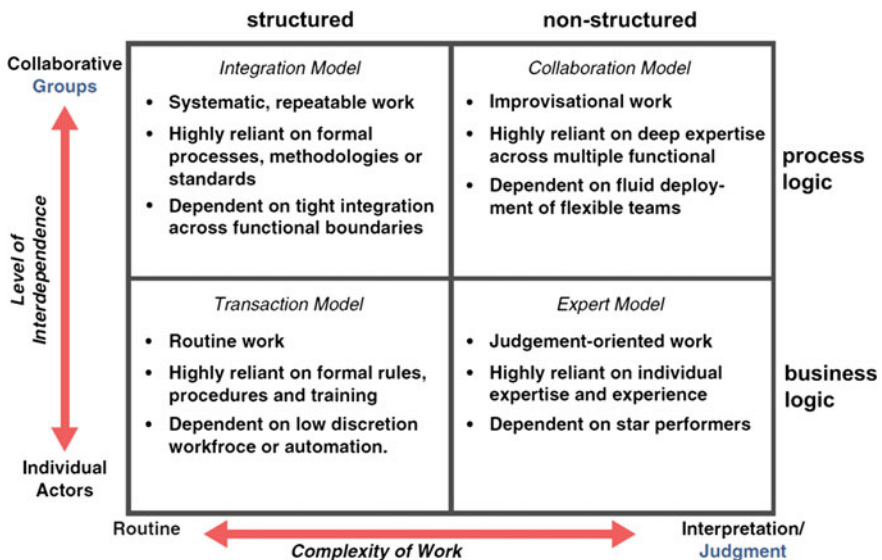


Fig. 2 Four approaches to knowledge work, from [3]

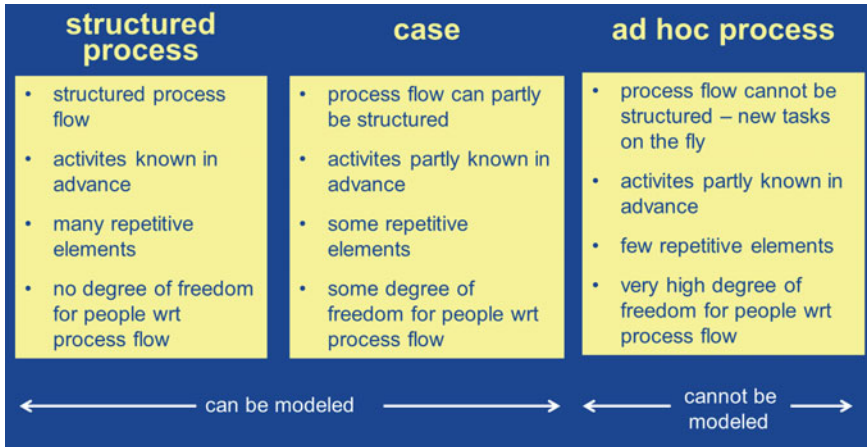


Fig. 3 Distinguishing processes by their degree of structure—translated from [7]

- For structured processes the activities and the conditions for their execution are known in advance.
- Ad hoc processes consist of activities, not all of which are known in advance. New tasks can be added on the fly and the people have a lot of freedom when to do which tasks. This means that the process flow cannot be modeled.
- Case processes contain both structured and ad hoc parts. There are tasks for which the conditions for their execution can be specified in advance. Not all tasks, however, can be embedded in a sequence flow. Human judgement and external events determine at run-time which activities need to be performed.

For real processes there is no strict separation between structured processes and cases. While the OMG defined two separate standards for the modeling of business processes and case management—BPMN [8] and CMMN [9]—the Knowledge Work Designer offers a new modeling language BPCMN which deeply integrates structured business processes and case parts.

In addition, the Knowledge Work Designer allows to model structured and nonstructured business logic. The formal rules and procedures of transaction work can be represented as decision models and decision tables, which allows to embed them in computer-based applications. Knowledge of expert workers, however, typically cannot be modeled in detail. High-level guidelines, checklist, and sample outputs of templates are more appropriate. For these, the document model is offered.

2 Method Description

The Knowledge Work Designer comprises standard modeling techniques for business processes (BPMN), case management (CMMN) and decisions (DMN). These modeling approaches, however, are not sufficient to model knowledge work

appropriately. Therefore, the Knowledge Work Designer makes extensions and modifications on several aspects of the modeling technique:

- Modeling language:
 - In order to be able to model any degree of process structure, an integration of business process modeling and case modeling is provided. The new modeling language is called Business Process and Case Management Notation (BPCMN).
 - A document model type is used, which serves two purposes: It can be used to represent the context of a case and it serves to model unstructured aspects of business logic.
- Modeling procedure:
 - The concept of decision-aware business processes separates process logic and decision logic.

2.1 Business Process Modeling

For structured business processes, all possible paths are defined in advance. Control flows from one activity to the next. There is an incoming sequence flow and an outgoing sequence flow relation for every activity. The control flow is explicitly represented and visualized using events and gateways. The Knowledge Work Designer uses the Business Process Model and Notation BPMN 2.0 [8] to model business processes.

2.2 Case Management Modeling

Adaptive Case Management (ACM) was proposed as an alternative approach for the management of unstructured and often unpredictable work patterns [6]. Case management processes are not predefined or repeatable, but instead, depend on evolving circumstances and decisions regarding a particular situation. Human judgment is required in determining how to proceed [10]. Depending on their individual knowledge and skills, people approach the same problems differently. Therefore, it must be possible to plan tasks at run-time.

The OMG published the new Case Management Model and Notation (CMMN), a modeling language specific for case management [9]. A case plan model contains plan item tasks and discretionary tasks. Plan item tasks are part of predefined segments; they correspond to the structured part of a case. Discretionary tasks are available to the Case worker, to be applied in addition. They can be added to the plan of the case instance at run-time (see Fig. 4). The execution of the discretionary

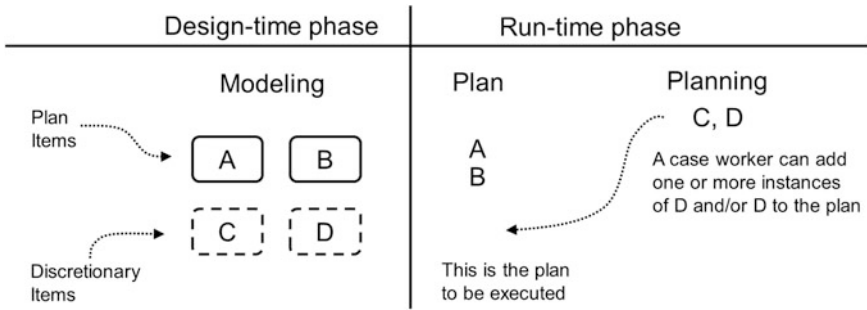


Fig. 4 Design-time modeling and run-time planning with discretionary tasks [9]

tasks depends on the context as well as the skills, experiences and preferences of the individual worker. This is how human judgment is supported by CMMN.

2.3 Document Modeling for Representing Case Files

Case execution is driven by events, context, and content. While activities occur, information is created and added to the case. This information together with the context around it determines the state of a case. Thus, a case evolves over time toward achieving a goal. It requires the ability to jump forward and backward or to repeat activities depending on the circumstances of the case (see Fig. 5).

All information that is required as context for managing a case is defined by a case file. The state of the case is determined by the content within the case file. The case file is not a single file but a kind of virtual folder with references to information in different formats and media: text documents, spreadsheets, emails, reports, databases, systems of records, voice mail, etc.



Fig. 5 Evolution of case execution depending on information in case file [6]

The Knowledge Work Designer uses the document model to represent the case file. A document in a document model can refer to any kind of structured and nonstructured information sources.

2.4 Business Process and Case Modeling

While case management is often considered as different from conventional business process management [6], in reality they cannot be strictly separated. A structured business process can contain parts which deal with nonroutine cases requiring additional investigation by different people. Silver [11] gives the example of dispute resolution as part of a structured payment process. When a customer disputes a charge or demands a refund, case management is usually required. Another example is underwriting, which is part of a structured process, but might require dealing with exceptions or requiring additional input.

On the other hand, there can be situations where a case management process contains structured elements. Project management is a typical example. Although it is composed of unanticipated tasks, it can contain structured process parts like financial reporting.

The only connection between process modeling and case management that is supported by the BPMN and CMMN standards is by referencing. CMMN has a special process tasks which can be used to call a business process. In a similar way, BPMN can be extended to call a CMMN case as a subprocess. This is done in the Knowledge Work Designer as shown in Fig. 6.

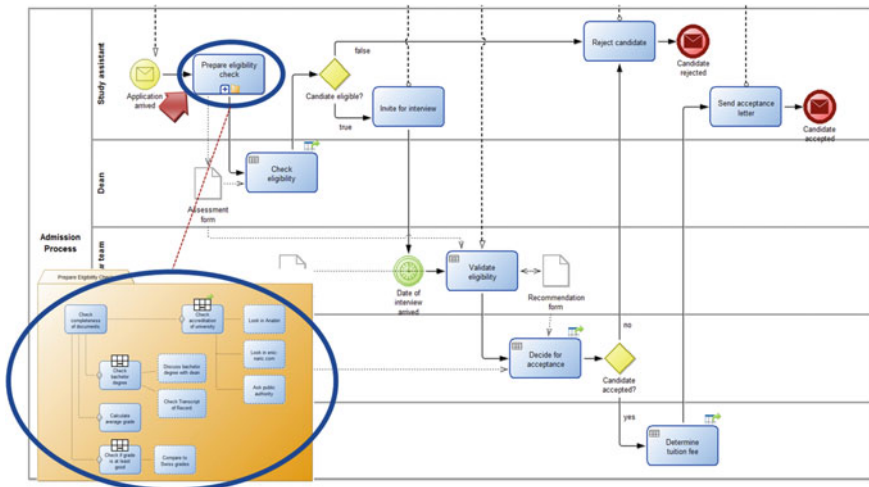


Fig. 6 A CMMN case as a subprocess of a BPMN model



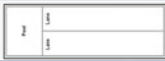

| | BPMN | CMMN |
|--------------------------|--|--|
| Tasks | Tasks | Tasks |
| Process hierarchy | Subprocesses, Call Activities | Process Tasks, Case Tasks |
| Events | Events: start – intermediate – end catching – throwing | Event Listeners, implicit Events, Milestones |
| Control Flow | Gateways/Events | Sentries |
| | Sequence Flow  | Sentry with empty condition  |
| Planning | -- | Discretionary Tasks |
| Responsibilities | Lanes | Role attribute |
| Process Container | Pool  | Folder  |

Fig. 7 Contrasting elements of BPMN and CMMN

This referencing, however, has some drawbacks. A process has to be broken into small fragments, which then are modeled using either BPMN or CMMN, depending on the level of structure. This makes sense, if there are larger parts, which can be isolated. In real processes, however, there are situations, in which there are discretionary tasks just for single activities in a structured process. On the other hand, even for case models it can make sense to make the control flow between some tasks explicit.

This is why the Knowledge Work Designer contains a new model type called BPCMN (Business Process and Case Management Notation), which deeply integrates process modeling and case modeling. The integration is based on a comparison of BPMN and CMMN. The main aspects of the comparison are shown in Fig. 7. The first column lists the aspects that should be modeled. The second and third column show how these aspects are modeled in BPMN and CMMN, respectively.

From Fig. 7 we see that most of the aspects can be modeled in any of the modeling languages. The advantage of BPMN is that it allows visualizing the control flow, which is helpful for communication between stakeholders. CMMN, on the other hand, supports planning at run-time which is missing for BPMN. A combination of control flow elements of BPMN and discretionary tasks and planning elements of CMMN could be a suitable language to deal with any kind of process.

Silver [11] claimed that BPMN covers about 90 % of what is needed for business processes. Furthermore, BPMN is more widespread. Thus, for BPCMN we started with BPMN and added the necessary case aspects.

2.5 Decision-Aware Business Processes

The term “decision-aware business process” was coined by [5]. They define a decision-aware business process as process that is designed to distinguish between process tasks and decision tasks. A basic idea behind this distinction is to separate the modeling of business logic from the modeling of decision logic, the latter being a special kind of business logic.

Separating business decisions from business process tasks simplifies the business process model and allows managing business logic in a declarative form.

- A business process model is a *procedural* solution because it prescribes a set of tasks that are carried out in a particular sequence.
- A decision table is an example of a *declarative* solution consisting of a set of typically unordered rules. A declarative solution only specifies what needs to be done, with no details as to how, in a step-by-step manner, it is to be carried out, because sequence is irrelevant to arriving at the correct result [5].

By separating business logic from business process logic, the process model becomes much simpler. Figure 8 shows on the left side a business process where decision logic about discount calculation is modeled with gateways. On the right side, the same process is shown as a decision-aware process. The rules for the discount calculation are described in a separate decision model. From the point of view of the business process, the decision logic is a black box evaluating conditions and reaching a conclusion. It can be viewed, managed, and executed independent from the process.

The separated modeling of business logic and process logic improves agility by making changes easier. It permits changes in the decision model without changing the business process model and vice versa. Furthermore, the decision model or individual decision tables and rules can be easily reused in several business processes.

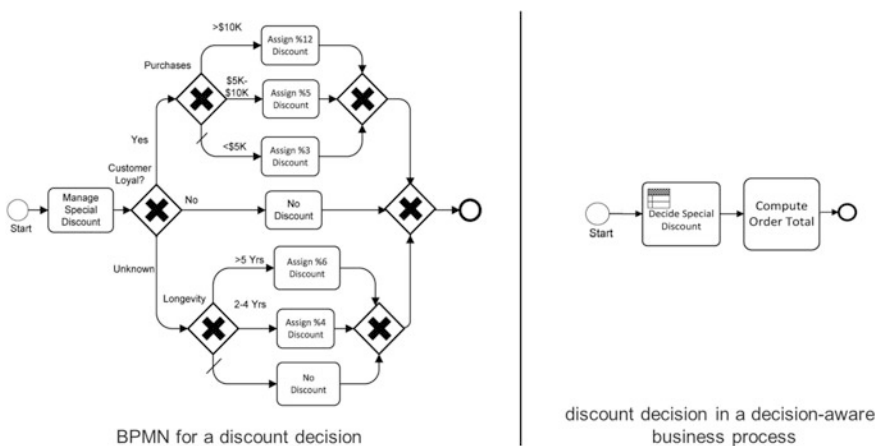


Fig. 8 Discount decision in BPMN and as a decision-aware business process [13]

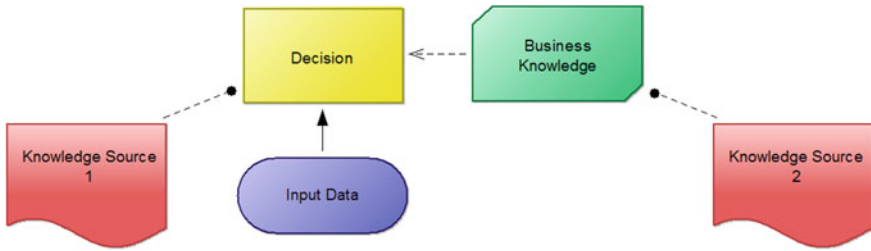


Fig. 9 DMN elements and requirements in a decision requirements graph [12]

2.6 Modeling Business Logic

To model business logic, the Knowledge Work Designer has a focus on decision modeling. The primary modeling method is the Decision Model and Notation (DMN) from the [12]. A DMN model consists of the Decision Requirements Diagram and the decision logic.

The Decision Requirements Diagram consists of four elements: Decision, Business Knowledge, Knowledge Source, and Input Data.

Figure 9 illustrates the elements and the requirements. The key element is the Decision. The Decision invokes a Business Knowledge model, which contains the decision logic. The Knowledge Sources represents the authority for a decision or business knowledge. An example for a knowledge source can be a regulation which determines the rationale for the decisions. The link between the business knowledge and its source provides traceability and a way for impact analysis.

The Decision and the Business Knowledge contain references to the decision logic. The Knowledge Work Designer supports three ways to represent decision logic

- A decision table is a boxed expression to represent decision logic in a structured way as a set of rules.
- A language called FEEL allows transferring decision logic into executable expressions.
- Not all decision logic can be modeled in a structured way. In particular, for the expert knowledge worker guidelines, checklists, sample outputs, or templates are more appropriate. These can be modeled as documents in the document model.

This satisfies the requirement that business logic can be represented in a more or less structured way: structured decision logic can be represented as decision tables; unstructured decision logic can be described as documents. Since the document model can have references to any kind of information, this approach is flexible enough to represent any kind of business logic.

3 Method Conceptualization

The model types of the Knowledge Work Designer are shown in Fig. 10. There are model types for both process logic and business logic. For both of them, there are model types for different degrees of structure.

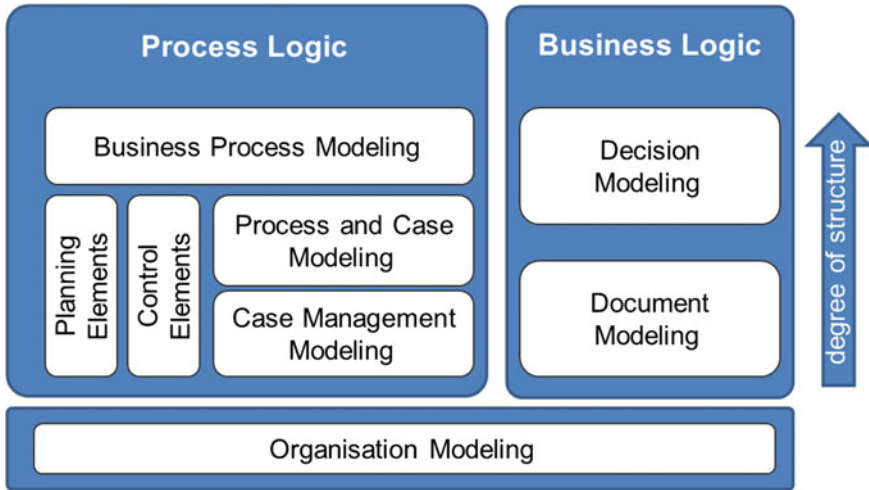


Fig. 10 Model types of the Knowledge Work Designer

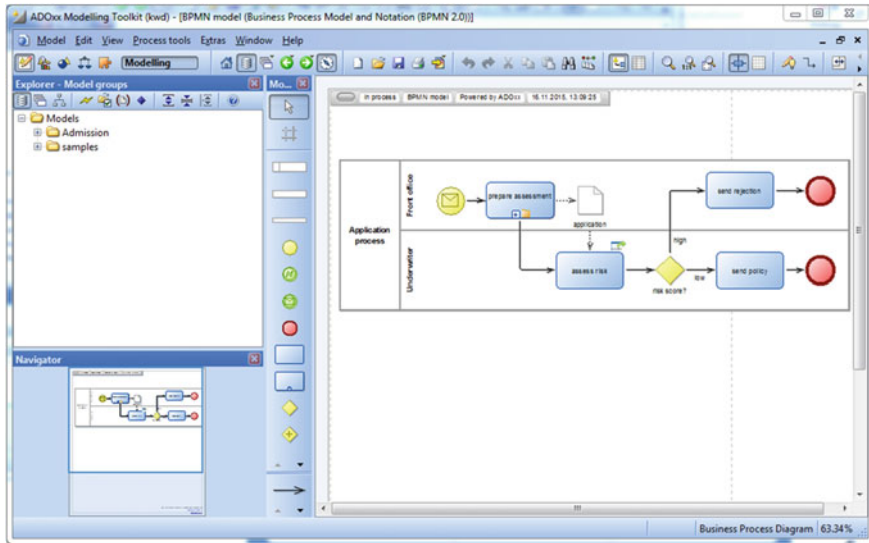


Fig. 11 Screenshot of a business process model in the Knowledge Work Designer

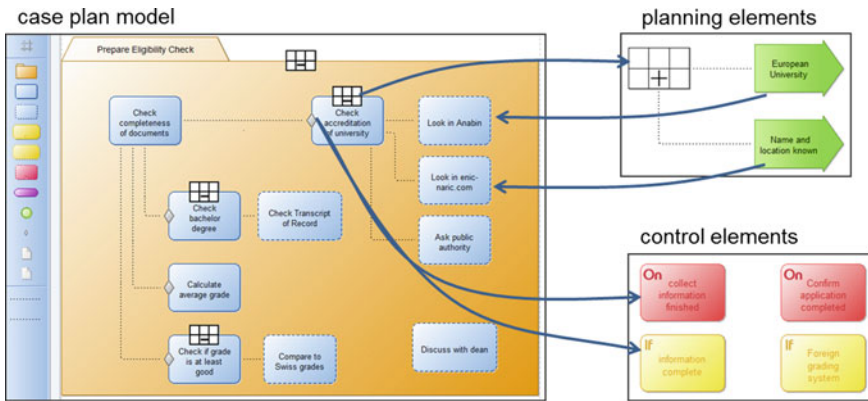


Fig. 12 A sample case plan model for preparing the eligibility check

The Knowledge Work Designer was implemented in ADOxx.¹ Figure 11 shows the interface with a BPMN sample process.

3.1 Case Management Modeling

Figure 12 shows an example of a case management model. The modeling language implements CMMN 1.0. It allows modeling both tasks and discretionary tasks. The latter are modeled with dashed borders. They can either be assigned to tasks. If they are not assigned to tasks, they can be executed at any time during the case execution.

The diamonds on the boundaries of tasks are sentries. Sentries define the criteria according to which the plan items are enabled and terminated. A sentry is a combination of an event and/or a condition.

- An On-Part specifies the event that serves as trigger.
- The If-Part specifies a condition that evaluates over the Case File.

In order to enable reuse, conditions and events of sentries are modeled in a separate model type—the control elements model. There is a link from the sentry in the case plan model to the corresponding on parts and if parts in the control elements model.

The case worker is supported in his/her planning by applicability rules. If the applicability rule for a discretionary task evaluates to true, the task is shown to the worker. The applicability rules are assigned to planning tables and modeled in a separate model to enable reuse for different discretionary tasks.

¹ADOxx.ORG, <http://www.adoxx.org>, last visit on 08.03.2016.

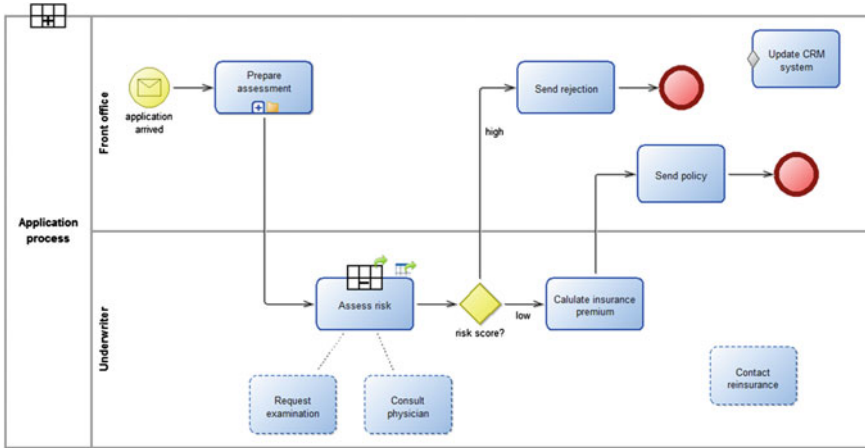


Fig. 13 Example of a BPCMN model

3.2 Business Process and Case Modeling

The Business Process and Case Modeling Notation BPCMN extends business process modeling with features of case management modeling. Figure 13 shows an example of a BPCMN model.

The process contains a structured part consisting of activities which are connected via sequence flow relationships as well as unstructured elements.

- The task “Assess risk” has two discretionary tasks associated to it—and a planning table which refers to applicability rules.
- The task “Update CRM” system is not embedded in the sequence flow. Its execution is determined by the sentry that is connected to it.
- There is a discretionary task “Contact reinsurance” which is not associated to a task and thus can be executed at any time. The planning table for this task is attached to the pool, which is the container of the process.
- The subprocess “Prepare assessment” calls a case model—as indicated by the small folder icon at the bottom of the element.
- The task “Assess risk” is a business rules task. It has a reference to a decision model. Thus, this is an example of a decision-aware business process.

3.3 Modeling Business Logic

As explained in Sect. 2.6, business logic can be represented in a structured and nonstructured way. The left part of Fig. 14 shows a decision model for the risk assessment of an insurance. The decision uses the data from the application as input

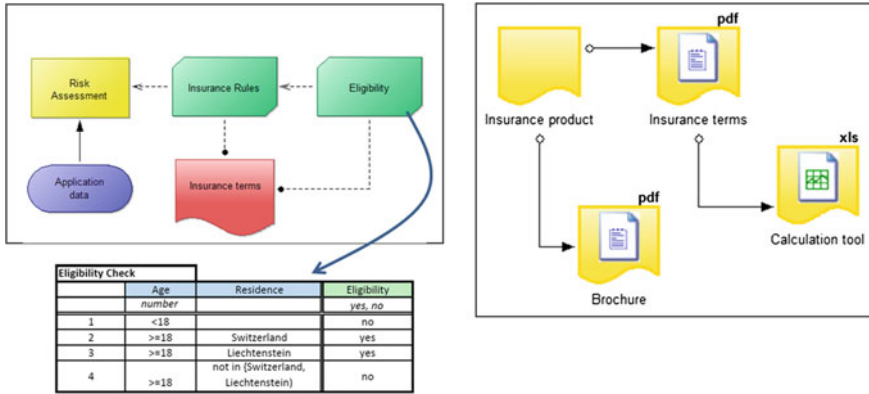


Fig. 14 Decision model and document model for representing business logic

and determines a risk score. The decision logic is assigned to the business knowledge element “Insurance Rules”. They are based on the Insurance terms which are a reference to an element in the document model.

The insurance rules can be represented in many different ways. A decision table is a formal representation, which can be interpreted by humans and can be translated into code for a rule engine. The document model can be used to represent nonstructured business logic, knowledge sources and documents of a case file.

4 Proof of Concept

The Knowledge Work Designer was applied to the admission process of the Master of Science study programs at School of Business FHNW. This is a description of the process

- The process starts when we receive the application from a candidate. First, the study assistant prepares the eligibility check of the candidate. The study assistant makes sure that all information is available to assess eligibility.
- It is ascertained that the bachelor degree is regarded as equivalent to Information Systems, Information Technology, or Business Administration. The study assistant may check the transcript of record if he/she is unsure.
- It is ascertained that the university from which the candidate got the bachelor degree is accredited. If the university is unknown to the study assistant, the study assistant typically looks in the Anabin database or on www.enic-naric.net. The study assistant can also ask public authorities to confirm the status of the university.

- It is ascertained that the average grade is at least “good”. If the average grade is not mentioned in the transcript, it is calculated by the study assistant. For unknown grading systems one has to find out how it compares to the Swiss grades.
- The study assistant can discuss with the dean at any time.
- The candidate is registered in the administration system.
- When all information is available, the dean checks the eligibility of the candidate.
- Candidates who are obviously not eligible are rejected.
- The other candidates are invited for an interview, which is made by the interview team. The output of the interview is a recommendation which is then input for the admission committee.
- The admission committee decides whether the candidate is accepted.
- For accepted candidates the administration determines the tuition fee.
- The study assistant informs the candidate about acceptance and tuition fee.

A first analysis showed that neither BPMN, nor CMMN alone are appropriate to model the process. The process is structured but it contains tasks, whose execution depends on the individual worker. For example, a university might be unknown to one study assistant, while another study assistant might know it. Thus, the check in the database only depends on the individual worker and the time when the assessment is made. The same is true for the translation of foreign grades.

A first solution was to identify those tasks which need human judgment and model them as a CMMN subprocess, while the main process is modeled in BPMN. The resulting model is shown in Fig. 6. The CMMN subprocess is shown in Fig. 12.

The disadvantage of this model is that for the CMMN subprocess the control flow is not visible. Furthermore, there is no visualization of the roles of the participants who are involved in the CMMN subprocess. These disadvantages can be overcome with the BPCMN model as shown in Fig. 15.

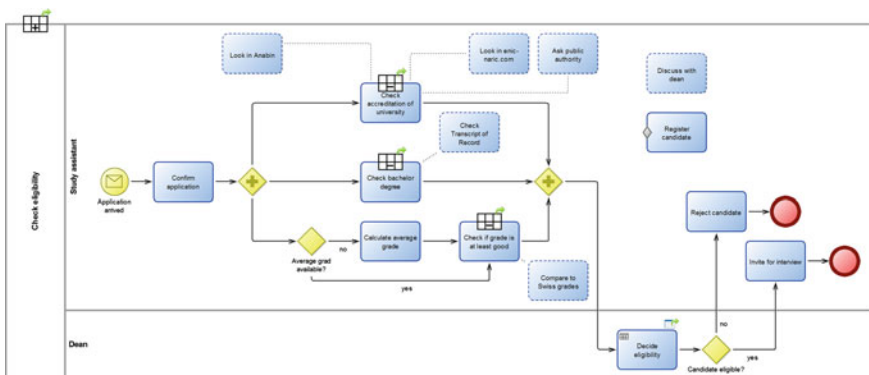


Fig. 15 A BPCMN model for eligibility check

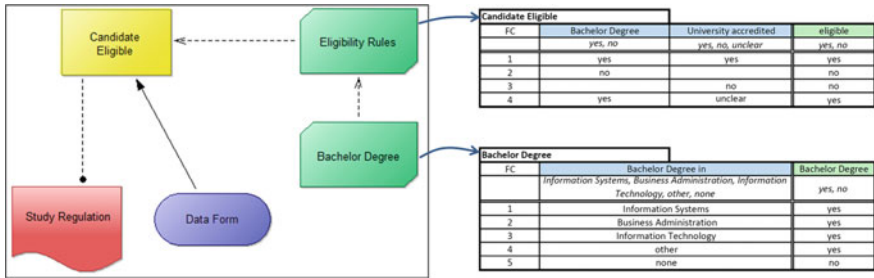


Fig. 16 Decision model for the eligibility check

In the model of Fig. 15, the control flow of the process is visualized. It can easily be seen that there are three parallel paths, but the task “Calculate average grade” is executed only if the average grade is not available. In the corresponding CMMN model in Fig. 12 the control flow is hidden in the conditions of the sentries. This declarative representation allows to model any level of complexity. In reality, however, people are used to think about process flow.

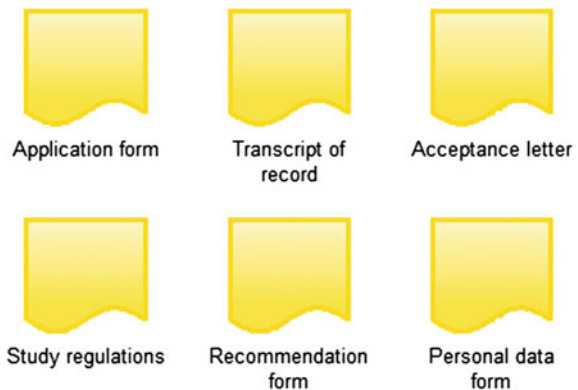
Flexibility of process execution is represented by

- the discretionary tasks, whose execution depends on the judgment of the individual participant.
- the task “Register candidate”, which is not part of the sequence flow and is executed as soon as its sentry evaluates to true.

The gateways in the process model determine the process flow but do not refer to any business logic. The business logic for the eligibility of the candidate is modeled separately in a DMN model (see Fig. 16).

The decision model contains the structured part of the business logic. The Study regulation refers to the corresponding document in the document model (Fig. 17).

Fig. 17 Documents of the admission process



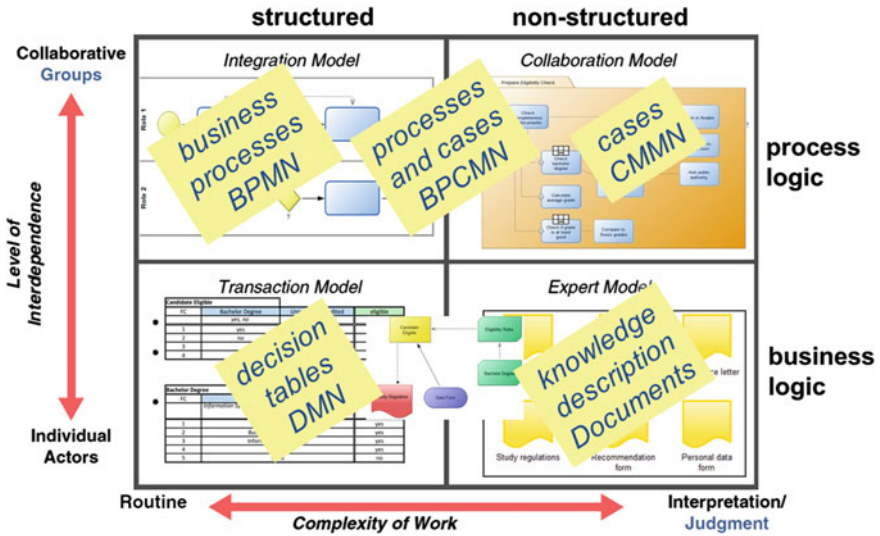


Fig. 18 Knowledge models and model types in the Knowledge Work Designer

The document model not only contains the unstructured business logic but also documents and data which determine the state of the process execution.

5 Conclusion

The Knowledge Work Designer is a modeling tool for flexible, decision-aware business processes. It includes a combination of modeling languages for both structured and nonstructured process logic and business logic as well as a new integration of business process and case modeling (see Fig. 18).

Process logic can be represented as a structured business process using BPMN, as a nonstructured case plan in CMMN or as a combination of both called BPCMN. The document model allows referencing any information, be it structured data or any kind of documents. Decision tables of DMN are currently the only representation formalism for structured business logic. Any other business logic can be stored in a file and referenced via the document model.

Future versions of the Knowledge Work Designer will include support for other types of visual knowledge representation like class diagrams, semantic networks, or ontologies.

Acknowledgments I thank Arianna Pierfranceschi who implemented the BPCMN model type. She put a lot of effort in the attractive design of the model elements and the scripts, which make modeling in the Knowledge Work Designer enjoyable.

Tool Download <http://www.omilab.org/kwd>.

References

1. Drucker, P.F.: The age of discontinuity: Guidelines to our changing society. William Heinemann Ltd, London (1969)
2. Rosen, E.: Every Worker Is a Knowledge Worker. Bloomberg Business (2011). http://www.businessweek.com/managing/content/jan2011/ca201110110_985915.htm. Accessed 14 Nov 2015]
3. Davenport, T.H.: Process management for knowledge work. In: vom Brocke, J., Rosemann, M. (eds.) Handbook on Business Process Management 1, pp. 17–36. Springer, Berlin (2010)
4. Brown, J.S., Duguid, P.: Organizational learning and communities of-practice: toward a unified view of working, learning, and innovation. *Organ. Sci.* **2**(1), 40–58 (1991)
5. von Halle, B., Goldberg, L.: The Decision Model: A Business Logic Framework Linking Business and Technology. CRC Press Auerbach Publications (2010)
6. Palmer, N.: BPM and ACM. In: Fischer, L. (ed.) Taming the Unpredictable, pp. 77–86. Lighthouse Point, FL (2011)
7. Gadatsch, A.: Grundkurs Geschäftsprozess-Management 7. Springer, Auflage, Wiesbaden (2012)
8. OMG: Business Process Model and Notation (BPMN) Version 2.0. Object Management Group OMG, Needham, MA (2011). <http://www.omg.org/spec/BPMN/2.0/PDF/>
9. OMG: Case Management Model and Notation Version 1.0. Object Management Group OMG, Needham, MA (2014). <http://www.omg.org/spec/CMMN/1.0/PDF>
10. McCauley, D.: Achieving agility. In: Fischer, L. (ed.) Mastering the Unpredictable: How Adaptive Case Management Will Revolutionize the Way That Knowledge Workers Get Things Done. Future Strategies Inc. (2010)
11. Silver, B.: Case management: addressing unique BPM requirements. In: Fischer, L. (ed.) Taming the Unpredictable, pp. 87–98. Lighthouse Point, FL, Future Strategies (2011)
12. OMG: Decision Model and Notation Version 1.0. Object Management Group OMG, Needham, MA (2015). <http://www.omg.org/spec/DMN/1.0/PDF>
13. Debevoise, T., Taylor, J.: The Microguide to Process and Decision Modelling in BPMN/DMN. Booksurge, North Charleston SC (2014)
14. Silver, B.: Sudden Impact: IBM Merges Case into BPM (2014). <http://brsilver.com/sudden-impact-ibm-merges-case-bpm-forgets-announce/>. Accessed 15 Nov 2015